



MARCH 24TH-26TH, 2023  
SACTHEATRE.ORG

# California Suite

BY NEIL SIMON

Directed by  
NATASHA HAUSE

Costume Designer  
MAE ALICE BURKE

Scenic Designer  
TYLER ALLIN

Lighting Designer  
EUNICE KIM

Sound Designer  
NATASHA HAUSE

Sound Engineer  
JACOB CHRISTIANSON

Student Production Assistant  
EMILY LEONG

Stage Manager  
MADDIE HARDIMAN

THE VIDEOTAPING OR MAKING OF ELECTRONIC OR OTHER AUDIO AND/OR VISUAL RECORDINGS OF THIS PRODUCTION AND DISTRIBUTING RECORDINGS OR STREAMS IN ANY MEDIUM, INCLUDING THE INTERNET, IS STRICTLY PROHIBITED, A VIOLATION OF THE AUTHOR(S)'S RIGHTS AND ACTIONABLE UNDER UNITED STATES COPYRIGHT LAW. FOR MORE INFORMATION, PLEASE VISIT:

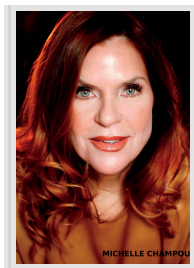
<https://concordtheatricals.com/resources/protecting-artists>

"California Suite" is presented by arrangement with Concord Theatricals on behalf of Samuel French, Inc. [www.concordtheatricals.com](http://www.concordtheatricals.com)

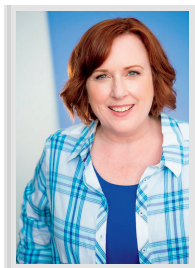
SCAN QR CODE

FOR CAST BIOS

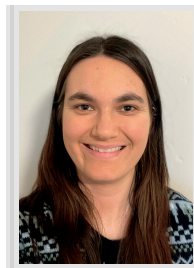
# *Adult Acting Class Members*



MICHELLE  
CHAMPOUX



CYNTHIA  
DRUMBOR



CAITLIN  
CROSBY



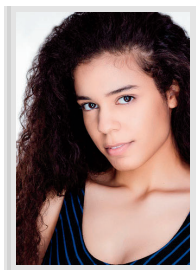
MADELEINE  
SOULE



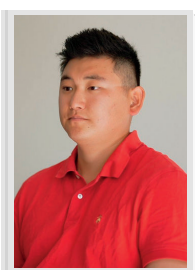
BRIAN  
LUTZ



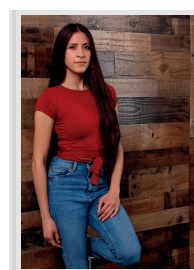
SHAWN  
O'NEAL  
SPECIAL GUEST



ALEXIS  
PINKNEY



SPENCER  
SHIN



GISELLE  
COLMENARES  
VIZCARRA

# *Cast*

Michelle Champoux.....Diana  
Giselle Colmenares Vizcarra....Hannah/Sue  
Caitlin Crosby.....Millie  
Cynthia Drumbor.....Mare  
Madeleine Soule.....Gert  
Brian Lutz.....Billy  
Alexis Pinkney.....Girl in Bed/Beth  
Shawn B. O'Neal.....Sidney  
Spencer Shin.....Marvin

## *Setting*

*California Suite* is composed of four playlets whose action takes place in rooms 203 and 204 at the Beverly Hills Hotel in the mid 1970s

## *Act I*

Scene One: *Visitor from New York*  
*About 1pm on a sunny warm day in late Fall*

Scene Two: *Visitor from Philadelphia*  
*11AM in mid December*

## *Act II*

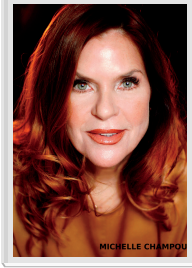
Scene One: *Visitors from London, about 4PM*

Scene Two: *About 2PM*

Scene Three: *Visitors from Chicago, 4pm on July 4th*



# *About the Company*



Michelle attended American Conservatory Theatre & is degreed in theatre & dance. A student of Natasha Hause @ S.T.C. Conservatory . Last seen at Capital Stage in *Admissions & Crimes of The Heart* @ Chautauqua playhouse. A dream come true to perform Neil Simon at Sacramento Theatre Company!



Giselle Colmenares Vizcarra graduated from CSU, Sacramento obtaining a B.A. degree in Theatre Arts. Most recently, Giselle had the opportunity of taking a monologue study course as well as a vocal techniques course at STC and is immensely delighted to be participating in *California Suite* under the direction of Natasha Hause.



Caitlin Crosby—After enjoying STC productions for years, Caitlin Crosby is thrilled to be in her first performance at Sacramento Theatre Company! She would like to thank her family and friends, and all of her teachers at STC.

# *About the Company*



Cynthia Drumbor is thrilled to be joining STC in California Suite. She has been active in theatre in the Sacramento area for over 20 years, in addition to film and commercials. She has appeared most recently with EMH Productions, Southern Discomfort Productions, Ovation Stage, Resurrection Theatre, and others.

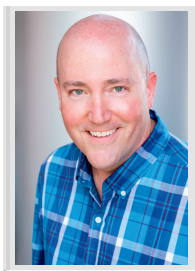


Madeleine is very excited to make her Sacramento Theatre Company debut in California Suite! Recently she has been taking acting classes in the community and even has a background role in the feature film *Fairyland*. Madeleine would like to thank her partner, family, and friends for always supporting her passions.

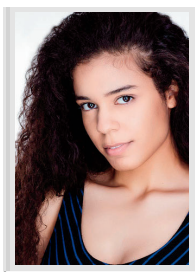


Brian Lutz grew up in the Los Angeles area and has been a part of community theater, television, and film throughout his life. After moving to Sacramento a few years ago, he has had the pleasure of taking scene study and monologue courses at Sacramento Theatre Company. Brian is excited to be back on stage and participating in *California Suite*.

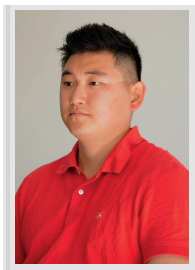
# About the Company



Shawn B. O'Neal is an accomplished actor/director who fine-tuned his craft at the American Conservatory Theater was seen in STCs *The Crucible* as Thomas Putnam. Acting credits: *The Pillowman* and *Twelfth Night* (Big Idea Theatre); *Angels in America Part 1 & 2* (Stockton Civic Theatre); *God of Carnage* and *Torch Song Trilogy* (Resurrection). Directing credits: *The Whale* (CA Stage); *Laundry & Bourbon*, *5 Women Wearing the Same Dress* (Resurrection); *A Little Murder Never Hurt Anybody* (MSTW).



Alexis Pinkney is a SAG-AFTRA member who has primarily worked in film & TV as well as voicing the Fenway Stevenson audiobooks. She recently stepped into theater with a role at Big Idea Theater as Damaris in *Holy Inappropriate* and is excited to learn from her experience at STC!



Spencer started his career in the theatre at the young age of four in his preschool drama program. He also posts movies on his YouTube channel called, "*Spencer Shin Action Movies*". He is making his official debut in the Sacramento Theatre Company to show what he can do.

# *About the Company*

## **STC Board of Directors**

Betsy Wood  
Cynthia Ward  
Cindy Lawton  
Beth Hassett  
Linda J. Clifford  
Carol Wieckowski Dryer

Patrick Harbison  
Trish Higgins  
Adonai Mack  
Sue Olson  
Kelly L. Pope  
Andrea Rogozinski  
Honesto Vargas

## **STC Staff**

**Executive Director:** *Michael Laun*

### **Production**

Production Manager: *Lyn Alessandra*  
Technical Coordinator: *Tyler Allin*  
Scenic Charge & Set Designer: *Maeve Morgan*  
Lead Carpenter: *Mathew DiPinto*  
Lighting Supervisor: *Isaiah Leeper*  
Master Electrician/Lighting Assistant: *Eunice Kim*  
Resident Stage Manager: *Cameron J. Turner*  
Sound Technicians: *Jacob Christianson & Ryan B. Samples*  
Costume Shop Manager & Wardrobe Supervisor: *Mae Alice Burke*  
Cutter & Draper: *Ariel Wood*  
Props and Scenic assistant: *Riley Gruenthal-Cisneros*  
Casting Director: *Miranda D. Lawson*  
Associate Producer: *Natasha Hause*

### **School of the Arts**

Young Professionals Conservatory Program Manager: *Miranda D. Lawson*  
Pre-Professional Ensemble Company Program Manager/Camp Manager: *Lisa Dillon*  
Education Coordinator: *Lyn Alessandra*  
Education Site Coordinator: *Kyle Swanegan*

### **Marketing and Development**

Director of Marketing and Development: *Ally Heatherly*  
Marketing and Development Assistant: *Kristin Maaskamp*  
Grantwriter: *Dawn Spinella*  
Event Coordinator: *Katherine Tracy*

### **Audience Services**

Audience Services Manager: *Kate Pratt*  
Senior Audience Services Representative: *Sandra Leong*  
Audience Services Representatives: *Bella Pearl Mullins, Samuel Quinzon, Caitlin Skinner, Elizabeth Springett*

### **Administrative**

Director of Business Operations: *Lisa Cannon-Wheeler*  
Facilities Manager: *Alan Almeida*  
Executive Assistant: *William Schmidt*  
Accounting Clerk: *Paige Kelly*  
Janitorial Staff: *Maria Castillo*

# *About the Company*

## **STC Board of Directors**

Betsy Wood  
Cynthia Ward  
Cindy Lawton  
Beth Hassett  
Linda J. Clifford  
Carol Wieckowski Dryer

Patrick Harbison  
Trish Higgins  
Adonai Mack  
Sue Olson  
Kelly L. Pope  
Andrea Rogozinski  
Honesto Vargas

## **STC Staff**

**Executive Director:** *Michael Laun*

### **Production**

Production Manager: *Lyn Alessandra*  
Technical Coordinator: *Tyler Allin*  
Scenic Charge & Set Designer: *Maeve Morgan*  
Lead Carpenter: *Mathew DiPinto*  
Lighting Supervisor: *Isaiah Leeper*  
Master Electrician/Lighting Assistant: *Eunice Kim*  
Resident Stage Manager: *Cameron J. Turner*  
Sound Technicians: *Jacob Christianson & Ryan B. Samples*  
Costume Shop Manager & Wardrobe Supervisor: *Mae Alice Burke*  
Cutter & Draper: *Ariel Wood*  
Props and Scenic Assistant: *Riley Gruenthal-Cisneros*  
Casting Director: *Miranda D. Lawson*  
Associate Producer: *Natasha Hause*

### **School of the Arts**

Young Professionals Conservatory Program Manager: *Miranda D. Lawson*  
Pre-Professional Ensemble Company Program Manager/Camp Manager: *Lisa Dillon*  
Education Coordinator: *Lyn Alessandra*  
Education Site Coordinator: *Kyle Swanegan*

### **Marketing and Development**

Director of Marketing and Development: *Ally Heatherly*  
Marketing and Development Assistant: *Kristin Maaskamp*  
Grantwriter: *Dawn Spinella*  
Event Coordinator: *Katherine Tracy*

### **Audience Services**

Audience Services Manager: *Kate Pratt*  
Senior Audience Services Representative: *Sandra Leong*  
Audience Services Representatives: *Bella Pearl Mullins, Samuel Quinzon, Caitlin Skinner, Elizabeth Springett*

### **Administrative**

Director of Business Operations: *Lisa Cannon-Wheeler*  
Facilities Manager: *Alan Almeida*  
Executive Assistant: *William Schmidt*  
Accounting Clerk: *Paige Kelly*  
Janitorial Staff: *Maria Castillo*